

Control & Acquisition Systems

armSOFT

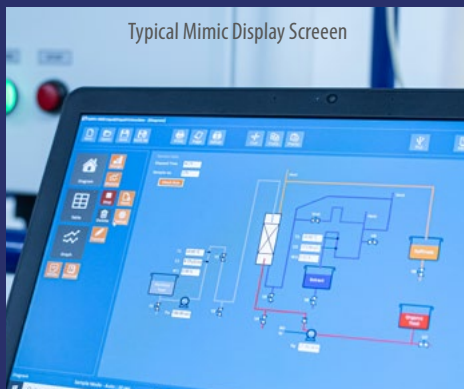
armSOFT data entry, data logging, acquisition and control software



Available for many Armfield products, with a wide range of features

- ▶ Remote access
- ▶ Remote control
- ▶ Data logging
- ▶ Realtime display
- ▶ Graph plotting
- ▶ Process results
- ▶ Export results to Excel
- ▶ Manual & automatic data entry
- ▶ Spreadsheet format
- ▶ Mimic diagrams
- ▶ Graphs
- ▶ Controller screen
- ▶ Intuitive interface
- ▶ Online help available
- ▶ Comes standard with many items

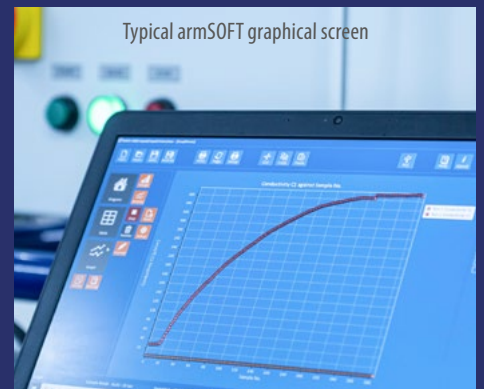
Typical Mimic Display Screen



Typical Tabular Display



Typical armSOFT graphical screen



The armSOFT™ suite of software from Armfield delivers an intuitive and simple to use range of computer applications. The user interface is generic across the range providing powerful data entry, data logging, acquisition and control software with a wide range of features which is available for many Armfield products.

Manual Data Entry - aBASIC

Some products are not suitable for data logging, and require the results to be input manually from primary instrumentation such as manometers or thermometers.

For these products the armSOFT aBASIC software offers a powerful tool for displaying and processing the results.



Data logging Facilities - aLITE

Powerful data logging software with automatic or manual sampling.

The data is stored in spreadsheet format, which also contains any calculated values.

The software includes powerful graph plotting tools enabling numerous display options, including dual y axes, points or lines.



Acquisition and Control - aSUITE

This package has all the data logging and general features of the armSOFT aLITE package, but also includes computer control.

A mimic diagram is used where set points and output values can be specified, PID loops can be tuned, and on-off switches can be controlled.

PID Control screen



Hardware

armSOFT data logging products connect to the computer using USB interfaces. The USB interface is either built into the main equipment or via a separate control unit such as the IFD7.

The interface details can be seen in the requirements section for each individual product, to utilise the USB interface a computer is essential.

Knowledge base

- > 28 years expertise in research & development technology
- > 50 years providing engaging engineering teaching equipment

Benefit from our experience, just call or email to discuss your laboratory needs, latest project or application.

An ISO 9001:2015 Company



armfield.co.uk

Aftercare

Installation
Commissioning
Training
Service and maintenance
Support: armfieldassist.com