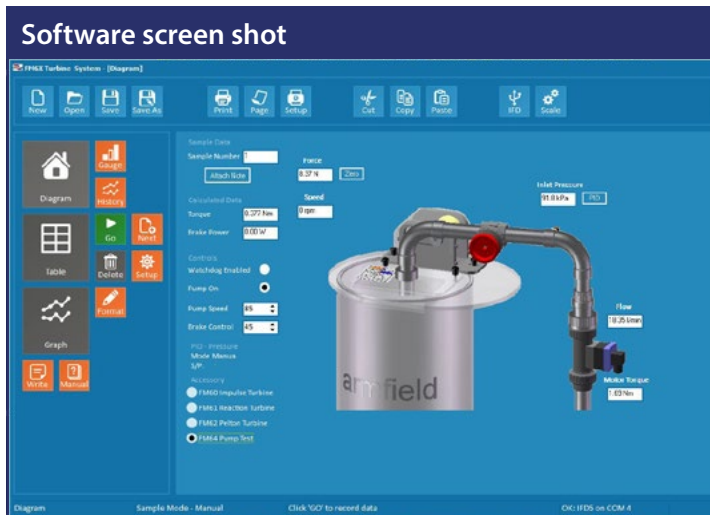


Pump Test Accessory – FM64

The FM64 consists of a return tube incorporating a gate valve which can be attached to the pump outlet on the FM6X service unit. The unit incorporates a pressure sensor to measure the inlet condition of the water.



Demonstration capabilities

- ▶ Determination of characteristic performance curves for a peripheral pump, including:
 - constant speed
 - head/flow
 - efficiency curves

Software

The ArmSOFT software enables the operator to control the pump speed 0 to 100%. Feedback from the sensors is then displayed in real time for the end user with simultaneous data logging.

The data trend is also displayed graphically in real time and can be exported to another platform such as Excel for further analysis.

Technical specifications	
Maximum flow:	50 l/min
Maximum head:	55m
Pipe Diameter:	1 inch
Pressure Sensor:	0 to 100psi
<i>Two year warranty on this product</i>	

Overall dimensions	
Length	0.50m
Width	0.14m
Height	0.23m
Packed and crated shipping specifications	
Volume	0.10m ³
Gross weight	10kg

Requirements **Scale**



- ▶ FM6X
- ▶ Armfield IFD7
- ▶ Software requires a computer running Windows XP or above with a USB port (computer not supplied by Armfield)

Ordering specification

- ▶ Compact accessory to enable investigation of pump performance
- ▶ Mounts on a dedicated service unit
- ▶ Links to a PC via the service unit and a USB interface console

Ordering codes

- ▶ FM64
- ▶ FM6X
- ▶ IFD7-A: 220-240V / 1Ph / 50Hz
- ▶ IFD7-G: 220-240V / 1Ph / 60Hz